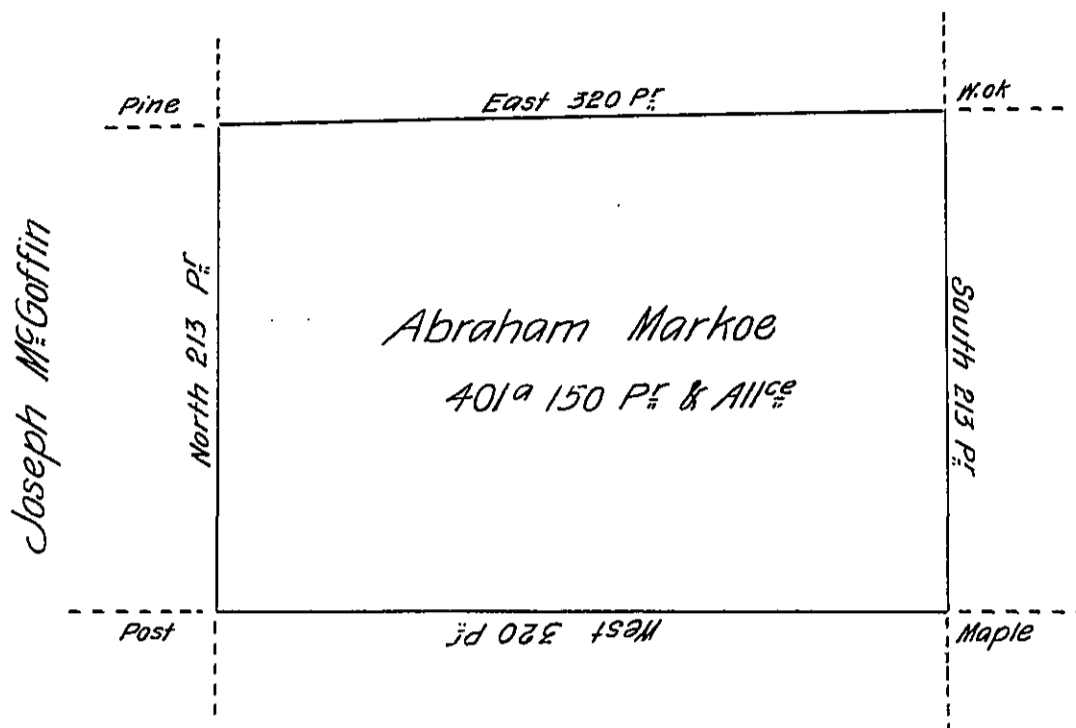


John Mc Gullough



Joseph Marsh

Situate on the west side of French Creek in Allegheny County.  
 Containing 401 acres and 150 P<sup>t</sup> and allowance of six P<sup>t</sup> Gent for Roads &c.  
 Surveyed the 26<sup>th</sup> day of October 1794. In Pursuance of a Warrant bearing  
 date the 30<sup>th</sup> day of May 1792.

W<sup>m</sup> Power Dy. S<sup>r</sup>

To Daniel Brodhead Esq<sup>r</sup>  
 Surveyor General

IN TESTIMONY that the above is a copy of the original remaining on file in  
 the Department of Internal Affairs of Pennsylvania, made  
 conformably to an Act of Assembly approved the 16th day of  
 February, 1833, I have hereunto set my Hand and caused  
 the Seal of said Department to be affixed at Harrisburg,  
 this second day of January 1906.

*Lauchlin Curran*  
 Secretary of Internal Affairs.